



MONTHLY MEMBERSHIP PROGRESS REPORT

District 30 M

Results as of: 3/31/2016

GMT: HARVEY WHITLEY

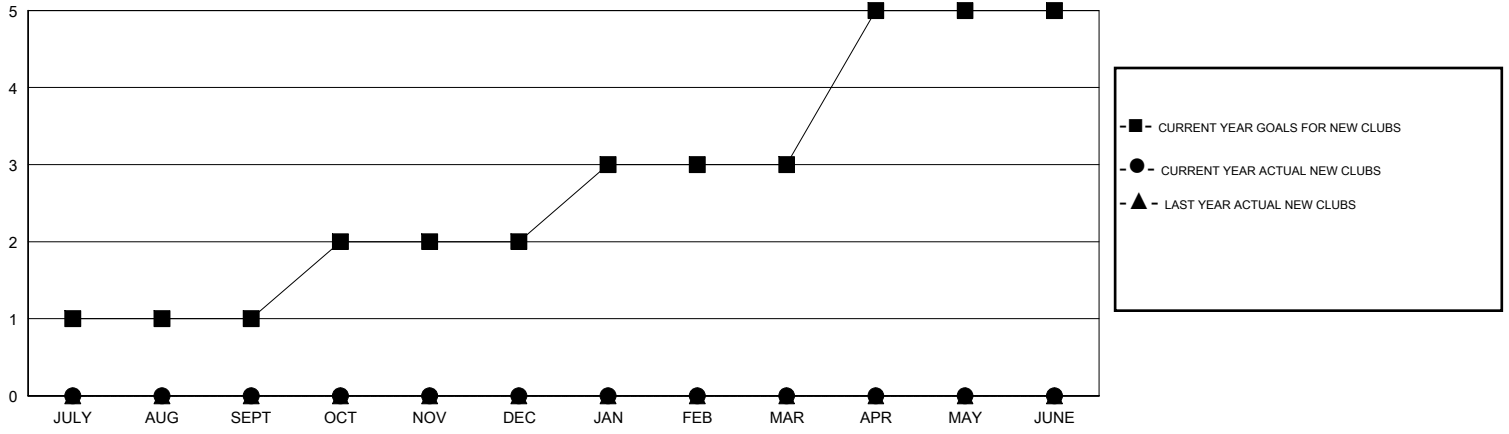
LOCATION MISSISSIPPI

GMT CA 1

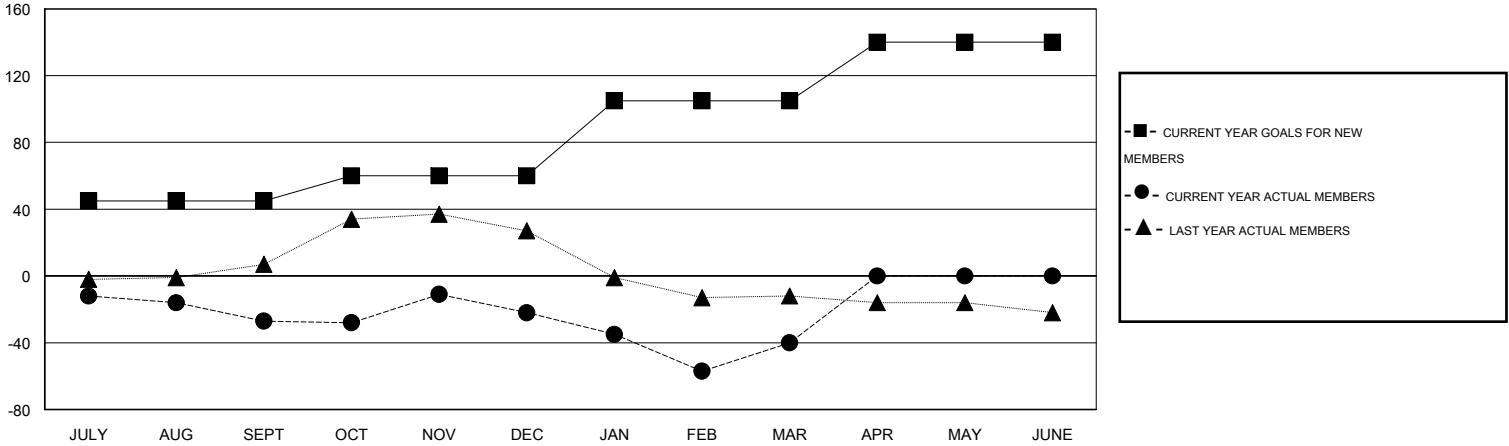
Clubs				
RESULTS FOR 2015-2016				
QUARTER	NEW CLUB GOAL	NEW CLUBS	DROPPED CLUBS	NET GAIN/LOSS
JULY/AUG/SEPT	1	0	0	0
OCT/NOV/DEC	1	0	1	-1
JAN/FEB/MAR	1	0	0	0
APR/MAY/JUNE	2	0	0	0

Members				
RESULTS FOR 2015-2016				
QUARTER	NEW MEMBER GOAL	CHARTER AND NEW MEMBERS ADDED	DROPPED MEMBERS	NET GAIN/LOSS
JULY/AUG/SEPT	45	39	66	-27
OCT/NOV/DEC	15	40	35	5
JAN/FEB/MAR	45	33	51	-18
APR/MAY/JUNE	35	0	0	0

GOALS AND ACTUAL NEW CLUBS CUMULATIVE



GOALS AND ACTUAL MEMBERS CUMULATIVE



DROPPED CLUBS: 1

38 CLUBS OF 56 ADDED 1 OR MORE NEW MEMBERS
--

GENDER DISTRIBUTION	
MALE	860 (75.17%)
FEMALE	284 (24.83%)

DROPPED MEMBERS	
DECEASED	11
CLUB CANCELLED	4
OTHER	137
TOTAL	152

[CLICK HERE FOR HEALTH ASSESSMENT DATA](#)

FAMILY UNIT MEMBERS	194
HEAD OF HOUSEHOLD	96
NON-HEAD OF HOUSEHOLD	98